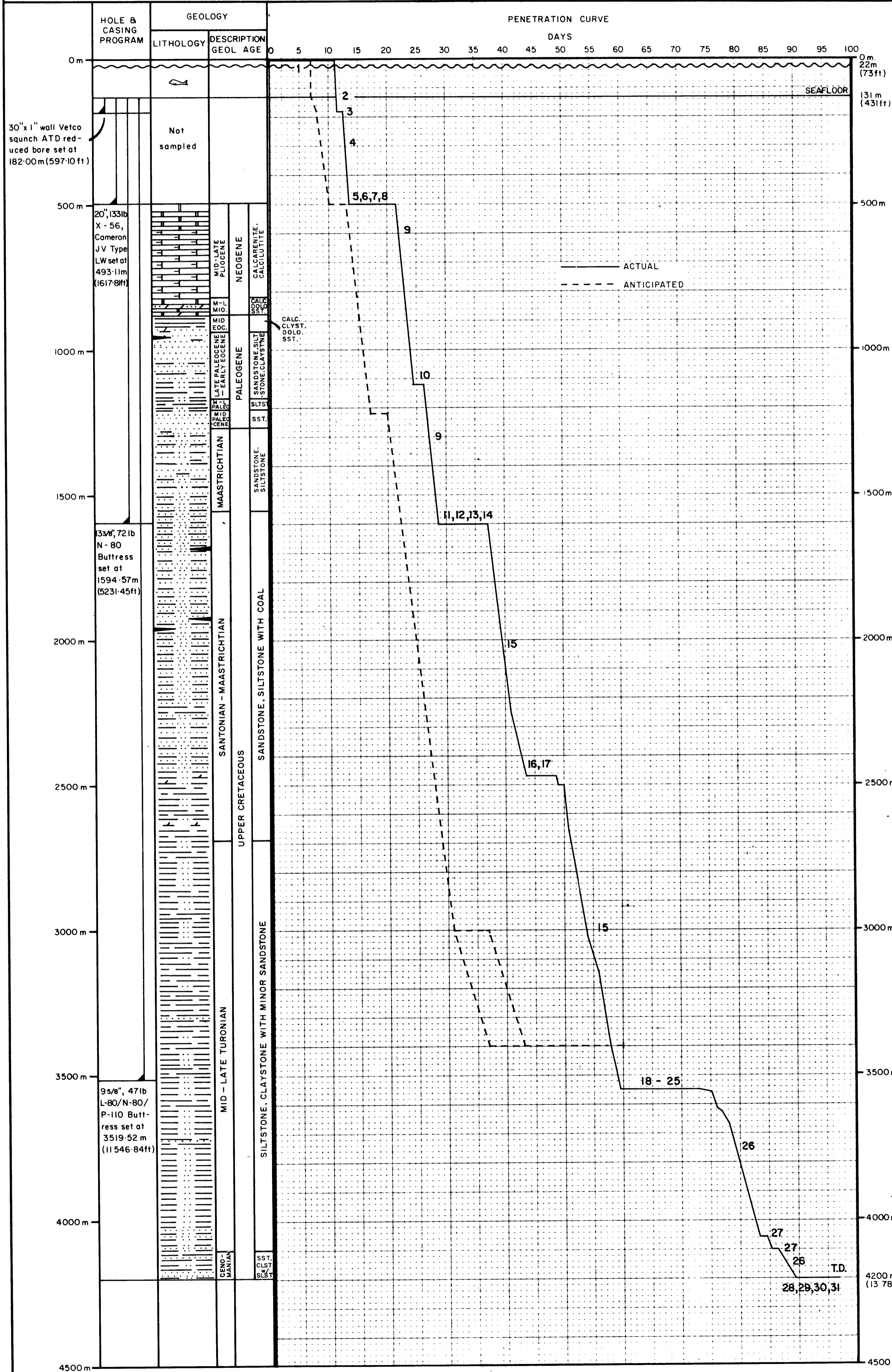




PHILLIPS AUSTRALIAN OIL CO.

OPERATION SUMMARY BRIDGEWATER BAY - I

DEPT. NAT. RES & ENV
PE900689



WELL NAME: BRIDGEWATER BAY - I
 LOCATION: Lat. 38° 32' 25.9698" S
 Long. 141° 21' 47.9468" E
 OPERATOR: PHILLIPS AUSTRALIAN OIL CO.
 CONTRACTOR: DIAMOND MARINE CO.
 DRILLING UNIT: DIAMOND M. EPOCH
 WATER DEPTH: 109 m (358 ft)
 TOTAL DEPTH: 4200 m (13780 ft)
 R/T TO M.S.L.: 22 m (73 ft)
 R/T TO SEABED: 131 m (431 ft)

THIRD-PARTY SERVICES

MUD ENGINEERING: BAROID
 MUD LOGGING: GEOSERVICES
 CEMENTING/DST: HALLIBURTON
 ELECTRIC LOGGING: SCHLUMBERGER
 PRODUCTION TESTING: FLOPETROL
 HELICOPTERS: OKANAGAN
 POSITIONING: O.N.A.
 FIXED WING: COMMERCIAL
 SUPPLY/WORK VESSELS: A.O.S.

PREPARED BY: D. WATTS, D. MURRAY
 DATE: MARCH, 1984

- LEGEND**
1. MOVE IN (4 DAYS), SET ANCHORS (3 DAYS) & WOW (3 DAYS)
 2. SPUD AND DRILL 36" HOLE
 3. SET 30" CASING
 4. DRILL 26" HOLE
 5. SET 20" CASING
 6. WOW (4-7 DAYS)
 7. SET ADDITIONAL PIGGYBACK ANCHORS (1-6 DAYS)
 8. RUN & TEST BOP/CASING
 9. DRILL 14 3/4" HOLE AND UNDERREAM TO 17 1/2"
 10. FISHING STUCK BOP TEST PLUG & WOW (2 DAYS)
 11. LOG RUN 1
 12. SET 13 3/8" CASING
 13. TEST BOP / CASING
 14. SQUEEZE CEMENT 13 3/8" CASING SHOE (5-5 DAYS)
 15. DRILL 12 1/4" HOLE
 16. REAM TIGHT HOLE (2 DAYS)
 17. FISH FOR DRILL STRING (3 DAYS)
 18. WOW (1-6 DAYS)
 19. RESET ANCHORS (1 DAY)
 20. PULL AND REPAIR BOP / RERUN SAME
 21. REAM TIGHT HOLE (4-3 DAYS)
 22. LOG RUN 2
 23. SET 9 5/8" CASING
 24. TEST BOP / CASING
 25. REAM TIGHT HOLE (4 DAYS)
 26. DRILL 8 1/2" HOLE
 27. LOSS CIRCULATION
 28. LOG RUN 3
 29. VELOCITY SURVEY
 30. PLUG & ABANDON
 31. PICK UP ANCHORS

TOW COMMENCED AT 2400 hrs 4-9-83
 RIG ON LOCATION AT 1030 hrs 9-9-83
 SPUDDED AT 1730 hrs 15-9-83
 T.D. AT 1100 hrs 2-12-83
 RELEASED RIG AT 1800 hrs 9-12-83

OIL and GAS DIVISION

07 JUN 1984